

[ THE OLSEN ]

Inspiration  
is the key

John Olsen



## Meetings & Events



Featuring award-winning interior design, The Olsen is nestled at the north end of Melbourne's iconic Chapel Street precinct.

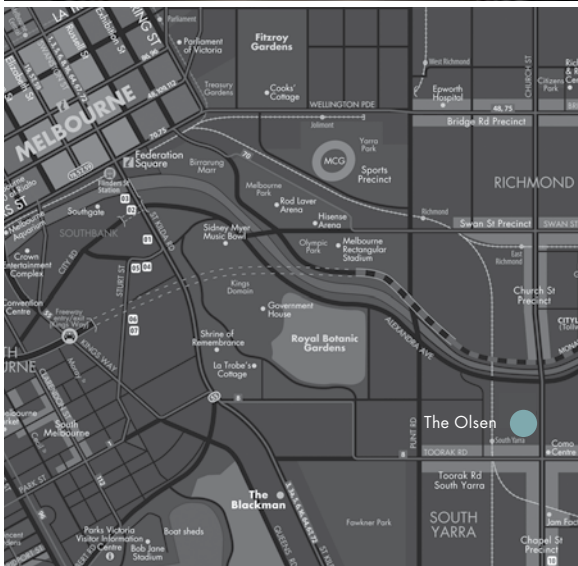
Adorned with the lyrical artwork of one of Australia's premiere painters: John Olsen, our unique event spaces offer numerous, flexible set ups flooded with natural light.

Ideal for launches, shows and seminars, or week-long boutique residential conferences, The Olsen's nine inspiring spaces provide the perfect backdrop for an event a little extraordinary.

### CONFERENCE, MEETING & EVENT FACILITIES

- 9 inspiring conference & event spaces
- Boutique spaces for up to 300 people
- Flexible setup options
- Stunning Melbourne views
- Wall mounted flat screen TVs with data connections
- Data projector and screen
- Individual heating and cooling systems
- iPod docking station
- Whiteboard & flipchart
- Wireless internet
- Automatic retractable blinds in Penthouse
- Invaluable event management expertise
- Conferencing Concierge
- Mouth watering in-house catering
- Inspiring artworks in all event spaces
- Art Curator on request
- Close to public transport
- On-site parking





## GALLERIES I – III

The Olsen Galleries I, II & III provide sophisticated executive spaces in the heart of cosmopolitan South Yarra. From boardroom to banquet they offer flexible setups, and a variety of catering options. Hired individually or transformed into one versatile space, our galleries are sure to impress.

## GALLERY IV

The Olsen's Gallery IV is a unique space drenched in sunlight. Featuring floor to ceiling glass walls and views across the azure blues of our glass bottom pool, this distinctive space is ideal for media calls, fashion launches, and blue sky brainstorming.

## DARE

DARE will inspire creativity, encourage collaboration and push your delegates to think outside-the-box. Dark and mysterious this unique space features 75' LED screen with state of the art surround sound, wireless connectivity, sleek glass walls to write on, Foxtel access and a conference concierge at your beck and call.

## COURTYARD & POOLSIDE

Overlooking the glass bottom pool, The Olsen's Courtyard & Poolside is an al fresco space featuring stylish designer decor and contemporary furniture. A canopy roof and gas-heating respond to Melbourne's ever changing weather. Simply perfect for cocktail events.

## JOHN OLSEN PENTHOUSE

Located on the top floor, take pleasure in spectacular sweeping Melbourne CBD skyline views, and soak your worries away in the balcony spa whilst looking over Chapel Street. Ideal for private dining, cocktail events and high-end meetings.

## LAKE EYRE PENTHOUSE

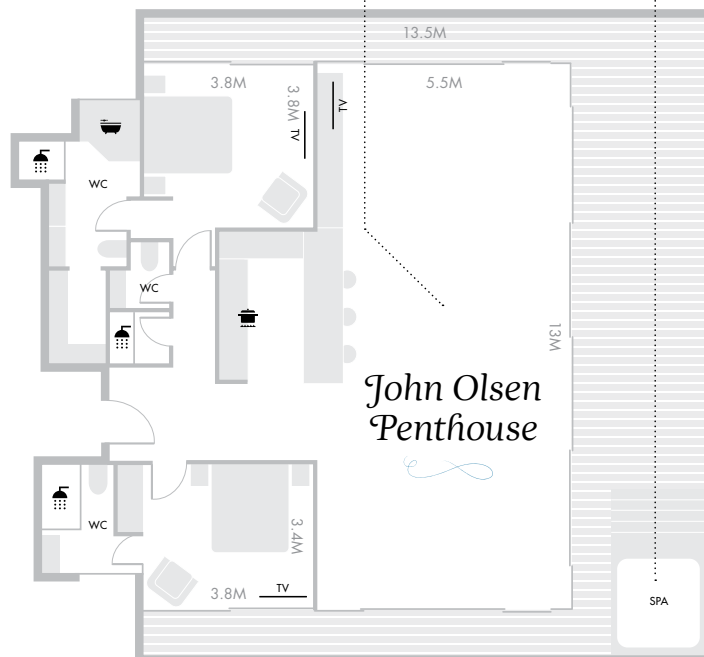
Be inspired and mesmerised by the sheer size and style of the Lake Eyre Penthouse. From the expansive Melbourne city skyline to the plunge pool and every little creature comfort in-between, Lake Eyre Penthouse provides an unforgettable setting for intimate dining, cocktail events and sophisticated meetings.

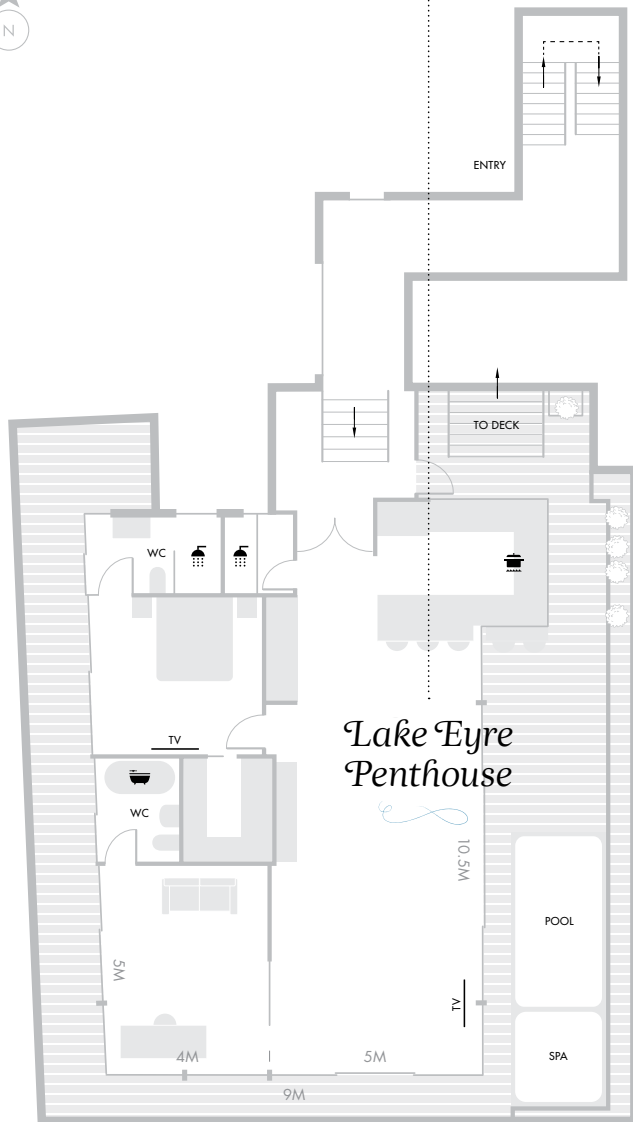
## SPOONBILL

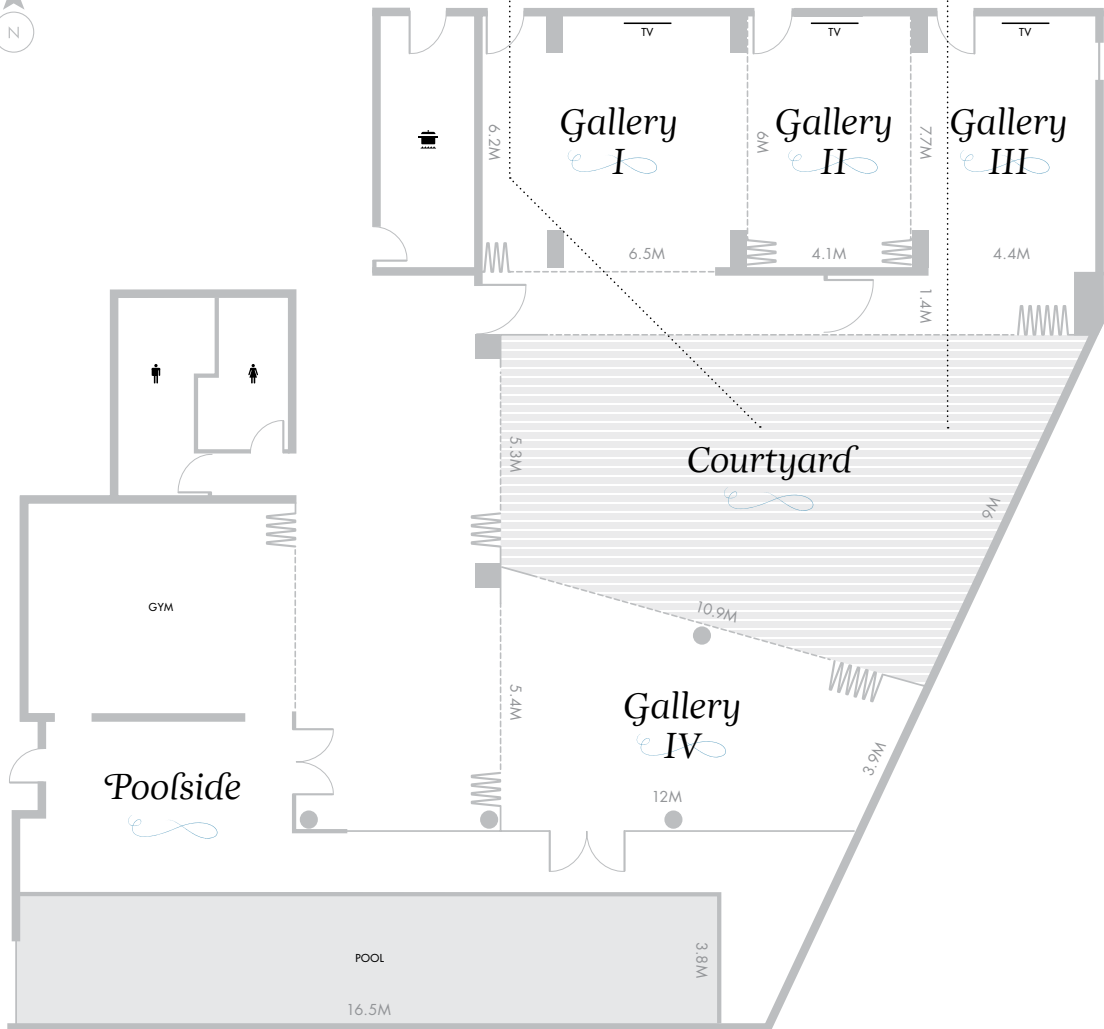
Our signature restaurant and bar, Spoonbill highlights Australia's seasonal produce and is available for functions large and small. The private dining room is the perfect escape for that special occasion or intimate gathering.

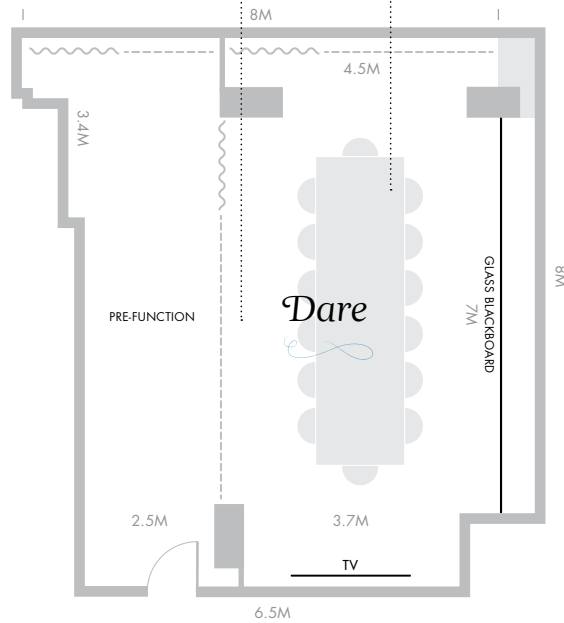


Spaces	Dimensions MxM	Gross Area Sq M	Capacity (Number of Persons)							
			Boardroom	Theatre	Classroom	Banquet	Cabaret	U-Shape	Cocktail	Fashion Launch /Showings
Gallery I	6 x 6	35	12	25	-	-	-	12	-	√
Gallery II	4 x 6	20	10	20	-	-	-	-	-	√
Gallery III	4.4 x 7	30	12	25	-	-	-	-	-	√
Gallery IV	10 x 4	40	20	36	-	30	20	20	50	√
DARE	-	70	14	-	-	14	-	-	-	√
Courtyard + Poolside	-	170	-	-	-	60	-	-	300	√
John Olsen Penthouse	-	156	20	25	-	36	20	-	80	√
Lake Eyre Penthouse	-	72	10	-	-	-	-	-	60	√
Spoonbill	17 x 11	180	12	-	-	-	-	-	150	√
Gallery I & II	10 x 5.5	55	20	45	-	-	20	22	-	√
Gallery II & III	8.4 x 6	50	20	45	-	-	15	22	-	√
Galleries I, II & III	14 x 6	85	34	80	-	-	30	34	50	√









## [ THE OLSEN ]

637-641 Chapel Street  
 South Yarra, VIC 3141

Call the Conference & Events team  
 on 1800 185 351

events@artserieshotels.com.au  
 theolsen.com.au